

VA



U.S. Department
of Veterans Affairs

VA Greater Los Angeles Healthcare System



PGY2 Pharmacy Residency

Neurology

Ambulatory Care

Pharmacy Fellowship

Cardiovascular Outcomes Research

VA GREATER LOS ANGELES HEALTHCARE SYSTEM



Introduction



The VA Greater Los Angeles Healthcare System (VAGLAHS) is one of the largest health care facilities within the Department of Veterans Affairs. It is one component of the VA Desert Pacific Healthcare Network (VISN22) offering services to Veterans residing in Southern California and Southern Nevada. VAGLAHS consists of two ambulatory care centers, a tertiary care facility and 8 community based outpatient clinics. VAGLAHS serves Veterans residing throughout five counties: Los Angeles, Ventura, Kern, Santa Barbara, and San Luis Obispo. There are 1.4 million Veterans in the VAGLAHS service area. VAGLAHS is affiliated with both UCLA School of Medicine and USC School of Medicine, as well as more than 45 colleges, universities and vocational schools in 17 different medical, nursing, paramedical and administrative programs.

The *West Los Angeles Healthcare Center (WLA)* is a tertiary care teaching facility dedicated to providing a wide array of acute and ambulatory patient care services to our nation's veterans. The comprehensive diagnostic and treatment services provided include a broad range of medical, surgical, and psychiatric care. Internal medicine subspecialties include cardiology, infectious diseases, gastroenterology, allergy, pulmonology, nephrology, endocrinology, rheumatology, and hematology/oncology. Major surgical subspecialties include orthopedics, urology,

neurosurgery, ophthalmology, plastics, ENT, podiatry, and cardiothoracic surgery. In addition to the main acute care hospital, there is a 180-bed nursing home, a hospice unit, and Home-Based Primary Care.

The *Sepulveda Ambulatory Care Center (SACC)* offers a state-of-the-art ambulatory care facility. The center has specialty outpatient programs in spinal cord injury, stroke rehabilitation, women's health, preventative medicine, dentistry, mental health, and chemical dependency. Extended care activities include a 120-bed nursing home and a Home-Based Primary Care Program. The facility hosts extensive clinical and basic science research, including Geriatric Research Education and Clinical Center (GRECC) and Field Program for Health Science Research and Development (HSR&D). The HSR&D program evaluates provider practice and patient outcome studies in the delivery of ambulatory health care.



The *Los Angeles Ambulatory Care Center (LAACC)* is located in the heart of Downtown Los Angeles. It serves as a centrally located facility for the diverse veteran population of the city of Los Angeles, focusing on primary care and mental health services. The clinic provides special services in post-traumatic stress disorder, day treatment, medical services, and mental health services.



General Information

The VAGLAHS offers PGY2 specialty residency programs in the area of Neurology and Ambulatory Care, as well as a 2-year fellowship in Cardiovascular Outcomes Research.

The **PGY2 Pharmacy Residency in Neurology** was the first ASHP accredited PGY2 Neurology Pharmacy Residency Program. It is one of only two neurology specialty residencies for pharmacists in the nation. Neurology is a growing area of specialty for pharmacists, especially within the VA. It is a twelve-month long program that provides a very diverse experience in both the acute care and ambulatory care settings. Training is primarily conducted at WLA.

The **PGY2 Pharmacy Residency in Ambulatory Care** is an ASHP accredited twelve-month long program. This program is

primarily conducted within a previously designated Center of Excellence in Primary Care Education (CoE PCE) in WLA's Homeless Patient Aligned Care Team (HPACT) and is focused on providing interprofessional care to the underserved.

The **Pharmacy Fellowship in Cardiovascular Outcomes Research** is a two-year joint program funded by Western University of Health Sciences. Fellows will obtain clinical experiences at the VAGLAHS in ambulatory care and possibly the acute care setting, depending upon the interests of the fellow. The trainee will be involved in academia, obtaining faculty status at the WU College of Pharmacy, as well as research. Candidates interested in the this fellowship would apply through Western University.



PGY2 Pharmacy Residency in Neurology

General Information

This specialty residency provides a comprehensive experience in contemporary neurology pharmacy practice, particularly in the areas of stroke and epilepsy. Clinical experiences in movement disorders, dementia/neurobehavior, and general neurologic disorders, such as headache and neuropathy, are offered, as well. Interested residents also have the option of integrating neurosurgery experiences into the training year. The resident will practice clinical pharmacy in an acute setting, as well as in an ambulatory setting. Residents are offered the ability to tailor the program to meet their interests in the field of neurology.

Neurology preceptors include skilled physician providers, neurology pharmacists, and research faculty members with

extensive experience in this specialty, as well as in research and academia.

Residents will be involved in teaching, with possible appointment as Adjunct Assistant Professor at the USC School of Pharmacy. Teaching opportunities include didactic and small group facilitations, as well as precepting pharmacy students and PGY1 pharmacy practice residents.

Clinical and laboratory based research opportunities are available. Residents are required to complete a neurology-oriented research project suitable for presentation and publication. The resident will be given the opportunity to develop a neurology-related research question based on their experience.

Practice Experience

West Los Angeles Healthcare Center (WLA):

Primary Preceptor: Sunita Dergalust Pharm.D., BCPS

Inpatient Experiences

- **Acute Care Neurology:** The resident will be responsible for reviewing and monitoring drug therapy and antimicrobial, heparin, and anti-epileptic drug pharmacokinetic dosing consults to physicians and allied healthcare professionals. Residents will serve as the drug therapy specialist, as well as a pharmacy educator on the team. Residents will provide education to patients on management of risk factors for secondary stroke prevention. They will actively participate in interdisciplinary team meetings and medical rounds. The medical team consists of Board Certified Neurologist attendings, UCLA Neurology fellows, UCLA Neurology residents, UCLA Psychiatry interns, and a clinical pharmacist.
- **Epilepsy Monitoring Unit:** This is a specialized unit that was developed as part of the Epilepsy Center of Excellence, used to properly identify seizure localization and subsequent surgical candidates. The resident will work closely with the Neurology fellow and will be responsible for obtaining a detailed admission history and medication history for long term video EEG monitoring. Residents will actively participate in assessing/planning safe drug titration on and off AEDs.
- **Acute Care Neurosurgery:** The resident will be responsible for reviewing and monitoring drug therapy and antimicrobial and anti-epileptic drug pharmacokinetic dosing consults to physicians and allied healthcare professionals. Residents will serve as the drug therapy specialist, as well as a pharmacy educator on the team. Resident will actively participate in interdisciplinary team meetings and neurosurgical rounds. The medical team consists of UCLA Neurosurgery attendings, UCLA Neurosurgery residents and Surgery interns, and a clinical pharmacist.

Ambulatory Care Experiences

- **Stroke Clinic:** In this clinic, residents will have the opportunity to assess/initiate/adjust medication regimens

under the supervision of clinical pharmacists and attending physicians. Resident responsibilities in the clinic also include: interviewing patients prior to seeing their provider, reviewing medication profiles for drug interactions, appropriate dosing, therapy duplication, possible medication-induced side effects, and assessing compliance and barriers to compliance.

- **Seizure Clinic:** In this one half-day per week clinic, residents will have opportunities to assess/initiate/adjust AEDs under the supervision of clinical pharmacist and attending physicians. In addition to having the same general responsibilities as those identified for the Stroke Clinic, residents, will assure a comprehensive AED history is obtained, as well as appropriately monitor seizure response.
- **Headache Clinic:** In this clinic, residents will have the opportunity to assess/initiate/adjust medication regimens under the supervision of clinical pharmacists and attending physicians. In addition to having the same general responsibilities as those identified for Stroke Clinic, residents will also educate patients regarding signs and symptoms of headache, as well as triggers.
- **Dementia/Neurobehavior Clinic:** In this one half-day per week clinic, residents will have the opportunity to conduct an in-depth review of medication profiles, evaluating all medications and their potential to contribute to memory disorders. Residents will also be involved in telephone titration of dementia medications.
- **Movement Disorder Clinic:** In this one half-day per week clinic, residents will have the opportunity to provide detailed counseling on medications to patients diagnosed with various movement disorders such as Parkinson's, ataxia, and tremor.
- **General Neurology Clinic:** In this two half-day per week clinic, residents will have the opportunity to provide detailed counseling on medications to patients diagnosed with general neurologic disorders, particularly headache and neuropathy.



PGY2 Pharmacy Residency in Ambulatory Care

General Information

This specialty residency offers a comprehensive experience in ambulatory care with an opportunity in providing care to the underserved. VAGLA's HPACT program is a nationally designated Homeless PACT, focused on delivering "whole health care." Established in July 2014, HPACT's four interprofessional teams are among the country's most highly concentrated groups of integrated mental health and primary care teams.

VAGLA has established an Interprofessional Academic PACT within our HPACT program (iA-HPACT). The iA-HPACT was created as a learning lab to promote the transformation of VA into interprofessional learning experiences to prepare trainees to practice, lead, and thrive in team-based health-systems.

The resident will participate in HPACT and PACT activities as integral members of the interprofessional team approximately seven half-days per week. An equivalent of approximately one day per week will be devoted to experiences in select

subspecialty clinics, in blocks of six weeks, depending upon the rotation and the interest of the resident.

Ambulatory care preceptors may include skilled physician providers, ambulatory care pharmacists, providers from other disciplines, and research faculty members experienced in their respective specialty, as well as in research and academia.

Residents will be involved in teaching, with possible appointment as Adjunct Assistant Professor at the USC School of Pharmacy. Teaching opportunities include didactic and small group facilitations, as well as precepting pharmacy students and PGY1 pharmacy practice residents.

Research project is required for successful completion of this program. The resident will be given the opportunity to develop an ambulatory care-related research question based on their experience.

Practice Experience

West Los Angeles Healthcare Center (WLA):

Primary Preceptors: varies depending upon clinic

HPACT/PACT Experience

- **Up to Four Days per Week** : The resident will be involved with providing clinical pharmacy services to HPACT patients on the iA-HPACT team with trainees from other disciplines (Primary Care Internal Medicine, Psychiatry, Nurse Practitioner, and Psychology). The resident will also work with other healthcare staff, such as RN Care Managers, licensed vocational nurses (LVN), and social workers. The resident will participate in morning team huddles, patient-team huddles for complex patients, team meetings, continuous quality improvement and workflow meetings, and learning seminars. Program learning goals emphasize complex care of homeless Veterans and interprofessional (IP) team collaboration. The curriculum will address IP competencies in five domains: complex care of homeless Veterans, IP collaboration; sustained relationships; shared decision making; performance improvement. This component of the residency is longitudinal.
- The resident will be involved with providing clinical pharmacy services to HPACT and PACT patients. Responsibilities include complex medication management of patients referred to pharmacy for chronic diseases such as diabetes,

hypertension, and dyslipidemia as well as prescription processing, medication counseling, provision of drug information, patient/provider education. Residents may also be involved in shared medical appointments (SMA), as well as in innovation and implementation of new services. This component of the residency is longitudinal.

Specialty Experiences

- **One-Two Days per Week**: The resident will practice in various subspecialty clinics, in blocks of six weeks throughout the year. This may include experiences in specialties such as anticoagulation, women's health, anemia, gastroenterology/hepatology, tobacco cessation, neurology, infectious disease, and cardiology. Depending upon the practice of pharmacy within each of the specialized clinics, responsibilities may include activities such as complex medication management of patients referred to pharmacy, clinical video telehealth (CVT), VA Video Connect (VVC), electronic consults (e-consults), shared medical appointments (SMA), and patient education.

Program Description

PGY2 Ambulatory Care Pharmacy Residents must successfully complete all required longitudinal and block rotations. Residents will select up to 3 elective blocks, ensuring 6 of 8 blocks are occupied by a block rotation.

Program Components	Description
Rotations Offered	<p>REQUIRED LONGITUDINAL</p> <ul style="list-style-type: none"> -HPACT/PACT -IA-HPACT -HPACT/PACT Staffing <p>Block rotations are 1-2 days per week for 6 weeks, unless otherwise noted:</p> <p>REQUIRED BLOCK (6 weeks)</p> <ul style="list-style-type: none"> -Anticoagulation -Cardiology -GI/Hepatology -Neurology <p>ELECTIVE BLOCK (6 weeks)</p> <ul style="list-style-type: none"> -Anemia -Women's Health -Infectious Diseases -Geriatrics (SEP) -Research
Diseases/Conditions Covered	<p>As required by ASHP, residents must have direct patient care experiences in at least 8 of the 15 areas identified in the appendix of <i>Required Competency Areas, Goals, and Objective for Postgraduate Year Two (PGY2) Ambulatory Care Pharmacy Residencies</i> (https://www.ashp.org/-/media/assets/professional-development/residencies/docs/pgy2-ambulatory-care-residency-competency-areas-goals-objectives.ashx), two of which may be covered by case-based application through didactic discussion, reading assignments, case presentations, and/or written assignments.</p> <p>Experiences in the following areas will be offered: Cardiology, Endocrinology, Gastroenterology, Men's Health, Neurology, Psychiatry, Pulmonology. Additional experiences can be offered in Dermatology, Geriatrics, Infectious Disease, and Rheumatology.</p>
Staffing Requirements	Staffing for PGY2 residents are incorporated longitudinally and do not require completion on additional days.
Residency Research Project	Residents are required to complete a research project suitable for presentation at a regional conference. Residents are also required to complete and submit a manuscript for publication and prepare and submit a poster presentation of their research project.
Teaching Responsibilities	<p>Residents will have the opportunity to precept APPE pharmacy students (Level IV), as well as IPPE pharmacy students (Level I/II/III), pharmacy interns, and pre-pharmacy students.</p> <p>Residents also have the option of a joint academic appointment with the USC School of Pharmacy which offers opportunities to teach and lecture to Level I, II and III Pharm.D. students. Residents are provided the opportunity to participate in various scheduled coursework and seminars developed to enhance the residency experience. Those residents participating in this affiliation will receive faculty appointment and earn a teaching certificate from the university. Participation may be an entire year or isolated to the 2nd half of the year depending upon the prior experience of the resident. A separate interview with USC may be required for this affiliation. Residents interested in the affiliation are also required to have an active California license.</p>

PGY2 Programs

General Program Information and Application

Program Components	Description
General Program Description	<ul style="list-style-type: none"> Type/Duration of Program: Full-time residency/12 months Number of Positions: <ul style="list-style-type: none"> Neurology: 2 Ambulatory Care: 2 Application Deadline (PhORCAS™): December 31, 11:59PM EST Residency Start Date: July 1 Estimated Stipend: \$50,922 Benefits: <ul style="list-style-type: none"> Health, vision/dental, and life insurance 10 paid holidays 13 days Sick Leave and 13 days Vacation/Annual Leave Free parking on-site (at all 3 campuses) Lab coats and lab coat laundry service Professional leave to attend meetings and educational conferences Partial financial support for registration fees and travel expenses to attend selected meetings
Requirements for Consideration	<ul style="list-style-type: none"> Doctor of Pharmacy degree from an ACPE accredited college of pharmacy Enrolled in or successful completion of a PGY1 Pharmacy Practice Residency US citizenship for Federal employment (<i>must be a US citizen at the time of application</i>) License may be from any of the 50 states (California licensure required if USC affiliated)
USC School of Pharmacy Affiliation	<ul style="list-style-type: none"> Optional joint appointment to the residency program Includes USC faculty appointment and teaching certificate Responsibilities include teaching/facilitating discussions for Level I, II and III pharmacy students, as well as lecturing pharmacy students and/or pre-pharmacy students Opportunity to participate in coursework and seminars developed by the university for pharmacy residents Active California licensure by September 30 of the residency year is required Separate interview with USC and subsequent acceptance by the university may be required Interested candidates should mark "YES" on the VAGLAHS Pharmacy Residency Supplemental Form
Required Application	<p>Register with the ASHP Resident Matching Program</p> <ul style="list-style-type: none"> www.natmatch.com/ashprmp <p>Application via PhORCAS™</p> <ul style="list-style-type: none"> Basic demographics Letter of Intent Curriculum Vitae (CV) Three References (via PhORCAS online recommendation form only) Official Pharmacy School Transcript conferring degree Extracurricular information <p>Supplemental Form via PhORCAS™</p> <ul style="list-style-type: none"> Supplemental Form – VAGLAHS Pharmacy Residency Please ensure all uploaded documents are complete/populated before submitting application <p>Interview</p> <ul style="list-style-type: none"> Interviews are offered to eligible candidates upon initial review of application materials Interview required for final consideration

Applications must be complete and meet yearly established deadlines to be considered. Only applications submitted via PhORCAS™ will be accepted.



U.S. Department
of Veterans Affairs

VA Greater Los Angeles Healthcare System

SUPPLEMENTAL FORM

VA Greater Los Angeles Healthcare System

PHARMACY RESIDENCY

Teaching Certificate Program

NAME: _____ SOCIAL SECURITY #: _____
LAST FIRST MIDDLE

VAGLAHS is affiliated with the **University of Southern California (USC) School of Pharmacy**. Residents have the **option of a joint appointment** as Adjunct Associate Professor of Pharmacy Practice. Successful completion of this program results in a teaching certificate from the university. As a responsibility of the affiliation, the resident will participate in facilitating first, second, and third year clinical case discussion groups with pharmacy students one-half day per week, as well as have opportunities to lecture, and develop a clinical case. In addition, participating residents will attend USC-sponsored trainings which include physical assessment, teaching methods, ACLS certification, and research methods. The faculty appointment requires approval by the USC School of Pharmacy, as well as a Pharmacist License in the state of California. Please indicate below if you are interested in being an affiliated resident. If yes, a copy of your application will be forwarded to USC for review.

I am interested in the USC affiliated position ☐ YES ☐ NO

All required components of the application, including this supplemental document, must be submitted using PhORCAS™ by **December 31, 11:59pm EST**. *Please ensure all uploaded documents are complete/populated before submitting application.* You will be notified of the time and place for an interview, should one be offered.

Both our PGY1 and PGY2 residency programs participate in the ASHP Residency Matching Program (RMP). It is recommended that you register with the ASHP Resident Matching Program by the yearly established deadline. Download the Application Agreement from www.natmatch.com/ashprmp.

For questions regarding the program, please contact:

Amy Cangemi, Pharm.D.
Pharmacy Residency & Education Program Manager
PGY1 Pharmacy Residency Program Manager
VA Greater Los Angeles Healthcare System
Pharmacy Service
11301 Wilshire Boulevard (691/119), Building 500, Room 6042
Los Angeles, CA 90073
(310) 478-3711, ext. 41975
Email: Amy.Cangemi@va.gov
Pharmacy Education: VHAWLAPharmEdu@va.gov

Fellowship in Cardiovascular Outcomes Research

Program Description

Western University of Health Sciences is an institution with a focus in graduate-level education of health science professionals. Founded in 1977, the university is a small, private, health-focused institution that fosters interprofessional learning. The university is committed to preparing graduates, in a learner-centered academic and professional environment, who will serve the health care needs of society for today and for the future.

The Fellowship in Cardiovascular Outcomes Research is a joint program between Western University of Health Sciences and the VA Greater Los Angeles Healthcare System (VAGLAHS). The fellowship is a 24-month non-degree

program in cardiovascular pharmacy and outcomes research, funded by Western University of Health Sciences.

Clinical activities may involve cardiology ambulatory care as well as acute care, depending on the focus of the training program. A teaching certificate is available through Western University of Health Sciences. Trainees will be required to rotate at both Western University of Health Sciences and VA West Los Angeles Medical Center, depending on required activities.



Application

<https://www.westernu.edu/pharmacy/pharmacy-academics/pharmacy-dpp-postdoctoral-training/>

For additional information regarding the Fellowship program and the application process, please contact:

Cynthia Jackevicius, BScPhm, MSc, Pharm.D., FCSHP, BCPS (AQ Cardiology)
Associate Professor, Pharmacy Practice and Administration
Program Director, PGY2 Pharmacy Residency in Cardiology
Western University of Health Sciences
cjackevicius@westernu.edu
909-469-5527





Current Residency Class of 2020-2021:

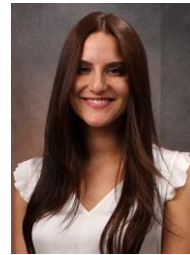
PGY1 Pharmacy Practice Residents



Shirley Cheung, Pharm.D.
University of Southern
California School of Pharmacy
Shirley.Cheung@va.gov



Emily Kim, Pharm.D.
Chief Resident
University of California, San
Diego Skaggs School of
Pharmacy
Emily.Kim@va.gov



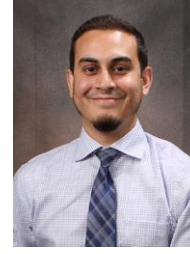
Dahlia Morovati, Pharm.D.
University of California, San
Francisco School of
Pharmacy
Dahlia.Morovati@va.gov



Vivian Or, Pharm.D.
University of Southern
California School of Pharmacy
Vivian.Or@va.gov



Christine Sahyouni, Pharm.D.
University of the Pacific,
Thomas J. Long School of
Pharmacy
Christine.Sahyouni@va.gov



Zaid Sheikh, Pharm.D.
University of Southern
California School of
Pharmacy
Zaid.Sheikh@va.gov



Ellen Son, Pharm.D.
Chief Resident
University of the Pacific,
Thomas J. Long School of
Pharmacy
Ellen.Son@va.gov



Justin Truong, Pharm.D.
University of California, San
Francisco School of Pharmacy
Justin.Truong@va.gov



Calvin Yip, Pharm.D.
University of Southern
California School of Pharmacy
Calvin.Yip@va.gov

PGY2 Ambulatory Care Pharmacy Residents



Julia Darnell, Pharm.D.
University of Colorado Skaggs School of
Pharmacy

Completed PGY1 Ambulatory Care Pharmacy
Residency 2019-2020 at University of California,
San Diego Health
Julia.Darnell@va.gov



Liesl Reyes, Pharm.D.
Massachusetts College of Pharmacy, Boston

Completed PGY1 Community-Based Pharmacy
Residency 2019-2020 at Safeway/University of
California, San Francisco
Liesl.Reyes@va.gov

PGY2 Neurology Pharmacy Residents



Caroline Kim, Pharm.D.
University of Arizona, College of Pharmacy

Completed PGY1 Pharmacy Practice Residency
2018-2019 at CHI Saint Joseph Hospital
Caroline.Kim3@va.gov



Katherine Liao, Pharm.D.
University of Toledo College of Pharmacy

Completed PGY1 Pharmacy Practice Residency
2019-2020 at University Hospitals Cleveland
Medical Center
Katherine.Liao1@va.gov



First Positions Accepted Post-Residency (Previous 4 years)

Program	Position
Neurology	<ul style="list-style-type: none"> • California Rehab Center - Neurology Clinical Pharmacy Specialist • Cedars Sinai – Neurology Clinical Pharmacy Specialist • Ochsner Medical Center (New Orleans) - Neurology Clinical Pharmacy Specialist • USC Keck Medical Center – Clinical Pharmacist • VA Greater Los Angeles Healthcare System – Clinical Pharmacist, Inpatient • VA Orlando Healthcare System – Neurology Clinical Pharmacy Specialist
Ambulatory Care	<ul style="list-style-type: none"> • LA County Department of Mental Health – Mental Health Clinical Pharmacy Specialist • Pomona Valley Hospital Medical Center/FHC – Ambulatory Care Clinical Pharmacist • San Francisco General Hospital– Ambulatory Care Pharmacist • VA Greater Los Angeles Healthcare System – Clinical Pharmacist, Outpatient • VA Sierra Nevada Healthcare System – Ambulatory Care Clinical Pharmacy Specialist

Residency Showcases and Open House Information

Southern California Residency Showcase

- Virtual – Friday, 8/14/20, 12PM-4PM

CSHP Seminar Residency Showcase

- Virtual – Friday, 10/23/20, 10AM-6PM

ASHP Midyear Residency Showcase

- Virtual – Tuesday, 12/08/20, 3PM-6PM EST

USC School of Pharmacy Residency Virtual Open House

- Saturday, 10/31/20, 9AM-12PM PST

VA GLA PGY1 Virtual Open Houses

- Friday, 11/06/20, 1:30PM-4PM PST
- Friday, 11/20/20, 1:30PM-4PM PST
- Friday, 12/18/20, 1:30PM-4PM PST
- For prospective 2021-2022 PGY1 Candidates Only
- To be added to our Open House Email List, please fill out the online form: <https://forms.gle/VdSCXnZcro7AnZa78>
- Please forward questions regarding this event to VAGLAResidency@gmail.com



U.S. Department
of Veterans Affairs
VA Greater Los Angeles Healthcare System

PGY2, NEUROLOGY

VA GREATER LOS ANGELES, ASHP Match Number 703883

PGY2, AMBULATORY CARE

VA GREATER LOS ANGELES, ASHP Match Number 728665

FELLOWSHIP, CARDIOVASCULAR OUTCOMES RESEARCH

WESTERN UNIVERSITY OF HEALTH SCIENCES

Contact Us:

VA Greater Los Angeles Healthcare System

Pharmacy Service

11301 Wilshire Boulevard (691/119)

Building 500, Room 6042

Los Angeles, CA 90073

Pharmacy Education: VHAWLAPharmEdu@va.gov

Amy Cangemi, Pharm.D.

Pharmacy Residency & Education Program Manager

PGY1 Pharmacy Residency Program Director

(310) 478-3711 ext. 41975

Amy.Cangemi@va.gov

Jenna Kawamoto, Pharm.D., BCACP

PGY2 Ambulatory Care Pharmacy Residency Program Director

Clinical Pharmacy Specialist, Gastroenterology/Hepatology/MOVE!

(310) 478-3711 ext. 44664

Jenna.Kawamoto2@va.gov

Sunita Dergalust, Pharm.D., BCPS

PGY2 Neurology Pharmacy Residency Program Director

Clinical Pharmacy Specialist, Neurology and Neurosurgery

(310) 478-3711 ext. 40384

Sunita.Dergalust@va.gov

Joy Park, Pharm.D.

Inpatient Clinical Pharmacy Education Program Manager

(310) 478-3711 ext. 40472

Joy.Park@va.gov

Linda Guo, Pharm.D.

Pharmacy Education Program Manager, Students and Clinical Review

Clinical Pharmacy Specialist, Women's Health and Transgender Health

(310) 478-3711 ext. 54220

Linda.Guo@va.gov

Frank Bertone, Pharm.D., BCPS, BCCCP

Acting Chief, Pharmacy Services

(310) 478-3711 ext. 53561

Frank.Bertone@va.gov

Alma Arrecis

Pharmacy Technician Training Coordinator

(310) 478-3711 ext. 42906

Alma.Arrecis@va.gov



Department of Veterans Affairs
VA Greater Los Angeles Healthcare System
www.losangeles.va.gov

West Los Angeles Healthcare Center
11301 Wilshire Boulevard | Los Angeles, CA 90073 | 310-478-3711

Sepulveda Ambulatory Care Center
16111 Plummer Street | North Hills, CA 91343 | 818-891-7711

Los Angeles Ambulatory Care Center
351 East Temple Street | Los Angeles, CA 90012 | 213-253-2677

<https://www.losangeles.va.gov/trainee/index.asp>
<http://www.pbm.va.gov/PBM/education/vapharmacyresidencyprogram.asp>